

# CHAMBER SAFE

A PRODUCT OF  
**U.S. FIREPLACE PRODUCTS**



- SUPERIOR ADHESION
- DESIGNED FOR PARGE OR CAST APPLICATIONS
- ADDS STRUCTURAL STRENGTH
- USED TO REPAIR BRICK, BLOCK STONE, CLAY FLUES & OTHER CLAY PRODUCTS
- SIGNIFICANTLY IMPROVES SMOKE CHAMBER DRAFTING

# CHAMBER SAFE

## HIGH PERFORMANCE REFRACTORY PARGING MATERIAL

Improves the flow or draft of the fireplace by creating a smooth transition into the flue from the smoke chamber

A PRODUCT OF  
**U.S. FIREPLACE PRODUCTS**

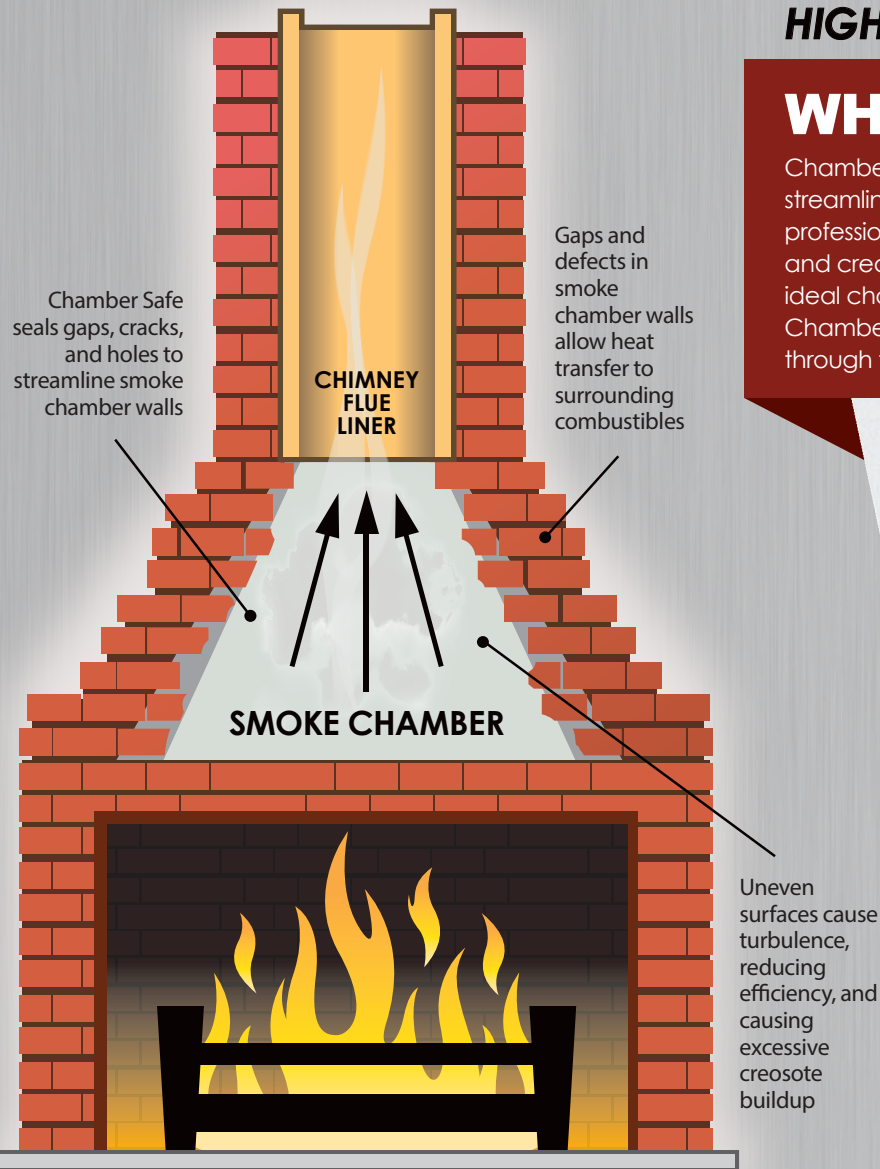


**Keep Your Fireplace Efficient!**

## HIGH PERFORMANCE, REFRACTORY PARGING MATERIAL

### WHY CHAMBER SAFE?

Chamber Safe is a UL Listed, high performance, refractory parging material, designed to strengthen, streamline, and restore the critical smoke chamber area in masonry chimneys. Preferred by chimney professionals, Chamber Safe smooths jagged, corbelled walls typically found in the smoke chamber, and creates a smooth transition between the smoke chamber and flue liner. Chamber Safe is the ideal choice for improving the flow or draft of the fireplace! The unique insulating properties of our Chamber Safe material improves the safety of the chimney by reducing radiant heat transfer through the smoke chamber. This product is non-water soluble.

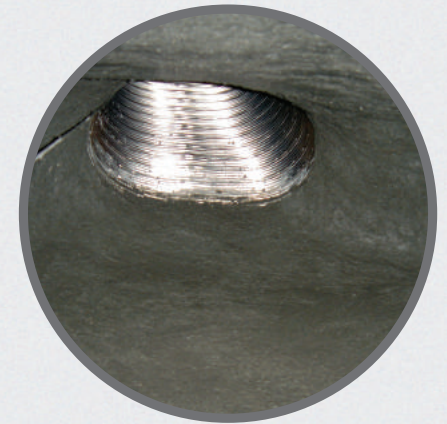


*"I've parged more than 1,000 smoke chambers, and Chamber Safe is the best product I've ever used."*

**— Shaun Peters (Certified Chimney Technician)**

### CHAMBER SAFE FEATURES:

- UL LISTED (UL 1777, ORD 2505)
- SUPERIOR ADHESION
- IMPROVES DRAFT
- BETTER WORKABILITY
- ADDS STRUCTURAL STRENGTH
- RESISTS TEMPERATURES UP TO 2500°F
- USE TO REPAIR BRICK, BLOCK, STONE, CLAY FLUES, AND OTHER CLAY PRODUCTS
- DESIGNED FOR PARGE OR CAST APPLICATIONS



### CHAMBER SAFE CAN REPAIR:

- FIREBRICK & MASONRY IN SMOKE CHAMBERS
- ASH PITS • CLAY FLUES • FIREBOXES • KILNS
- MASONRY HEATERS • MASONRY OVENS
- MASONRY WALLS • VENT CONNECTIONS
- WOODSTOVES • AND MORE!

Meets ASTM standards E-196, C199 and C401

**Improve Your Fireplace Flow - Use Chamber Safe!**